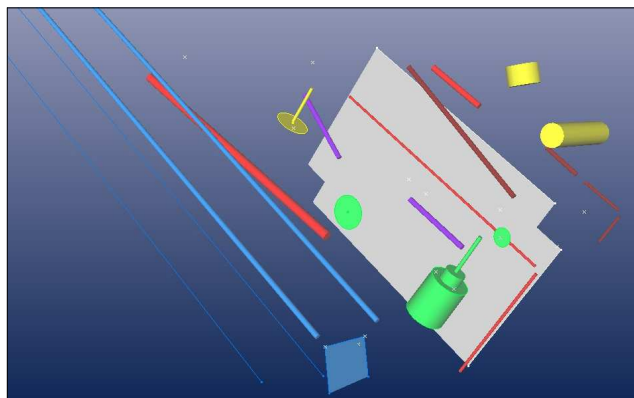
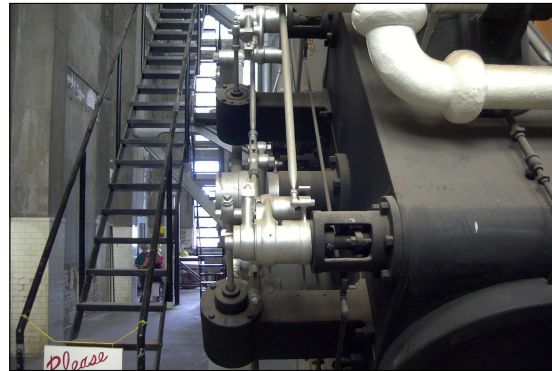
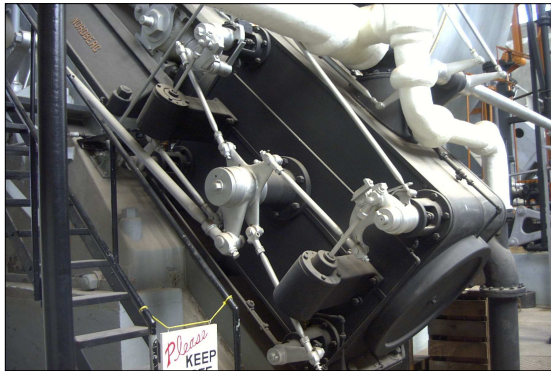
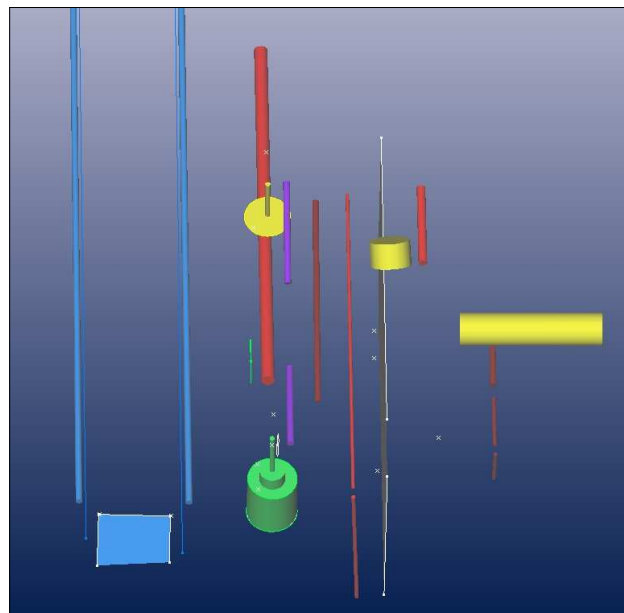


Connecting rods and piping Nordberg Hoist Engine at Quincy Mine No. 2 Hancock, Michigan 1919



Perspective view



Orthographic view

The Nordberg engine is the largest steam hoisting engine in the world.

The example demonstrates the spatial mapping of various mechanical elements of the engine.

With suitable photography, a 3D model of the entire engine can be created for analysis or export into various modeling software formats such as 3D Studio, Wavefront, IGES, Rhino, Maya, VRML, 3D DXF; and others.