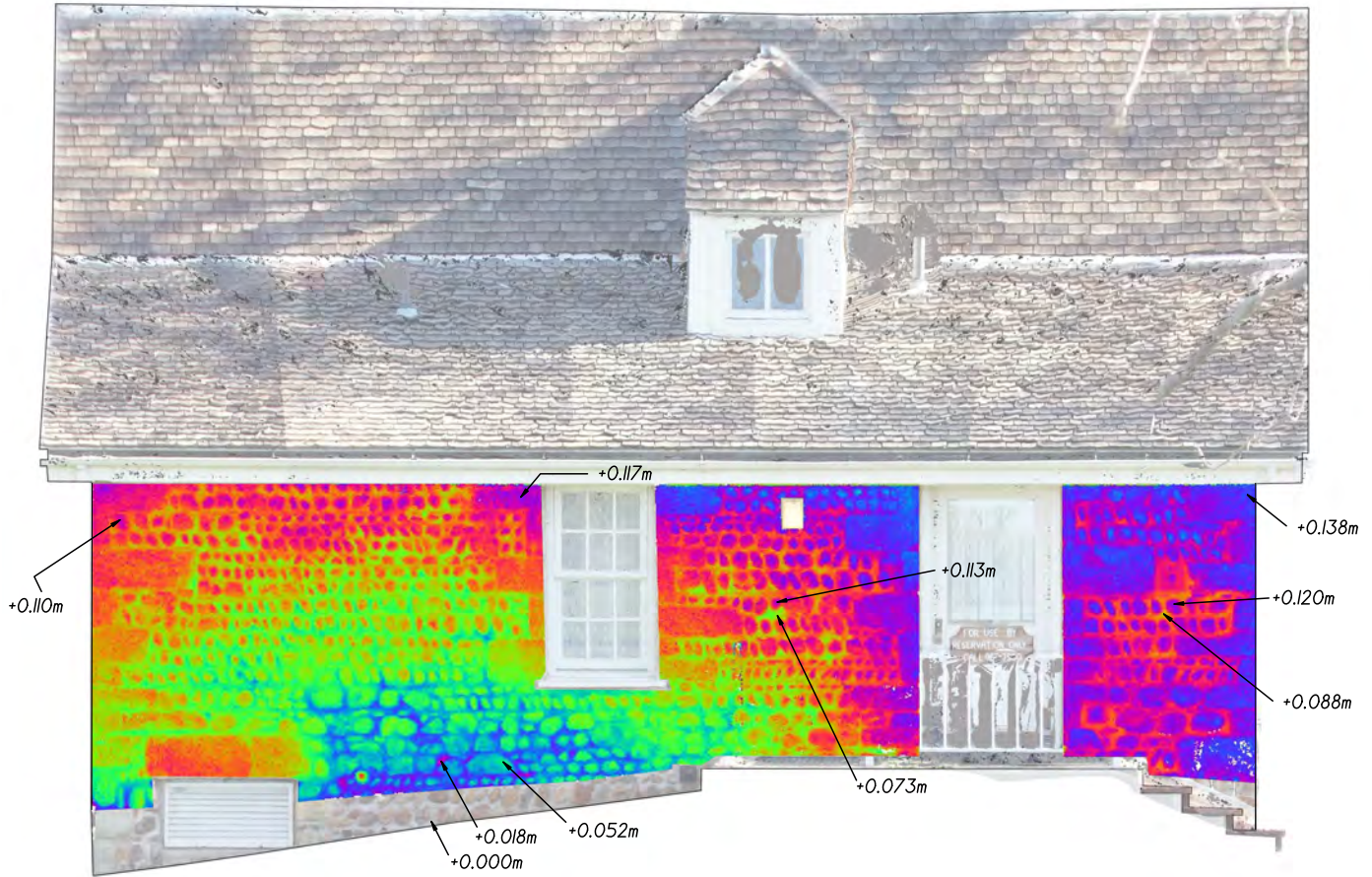


The Stone House Lakewood, Colorado South Elevation



Located on South Estes and West Yale Avenue, this house was constructed sometime between 1859 and 1864 and is listed on the National Register of Historic Places. The house was built from stones collected from Bear Creek and with rough-dressed sandstone quarried from a nearby hogback. The walls are 18" thick.

The scaled color ramp depicts variations from a vertical plane which is parallel with the fascia. Positive values represent distances normal to the vertical plane in the direction of the viewer. The maximum deviation of the wall surface from vertical is +14 centimeters.